

LASERBOND®

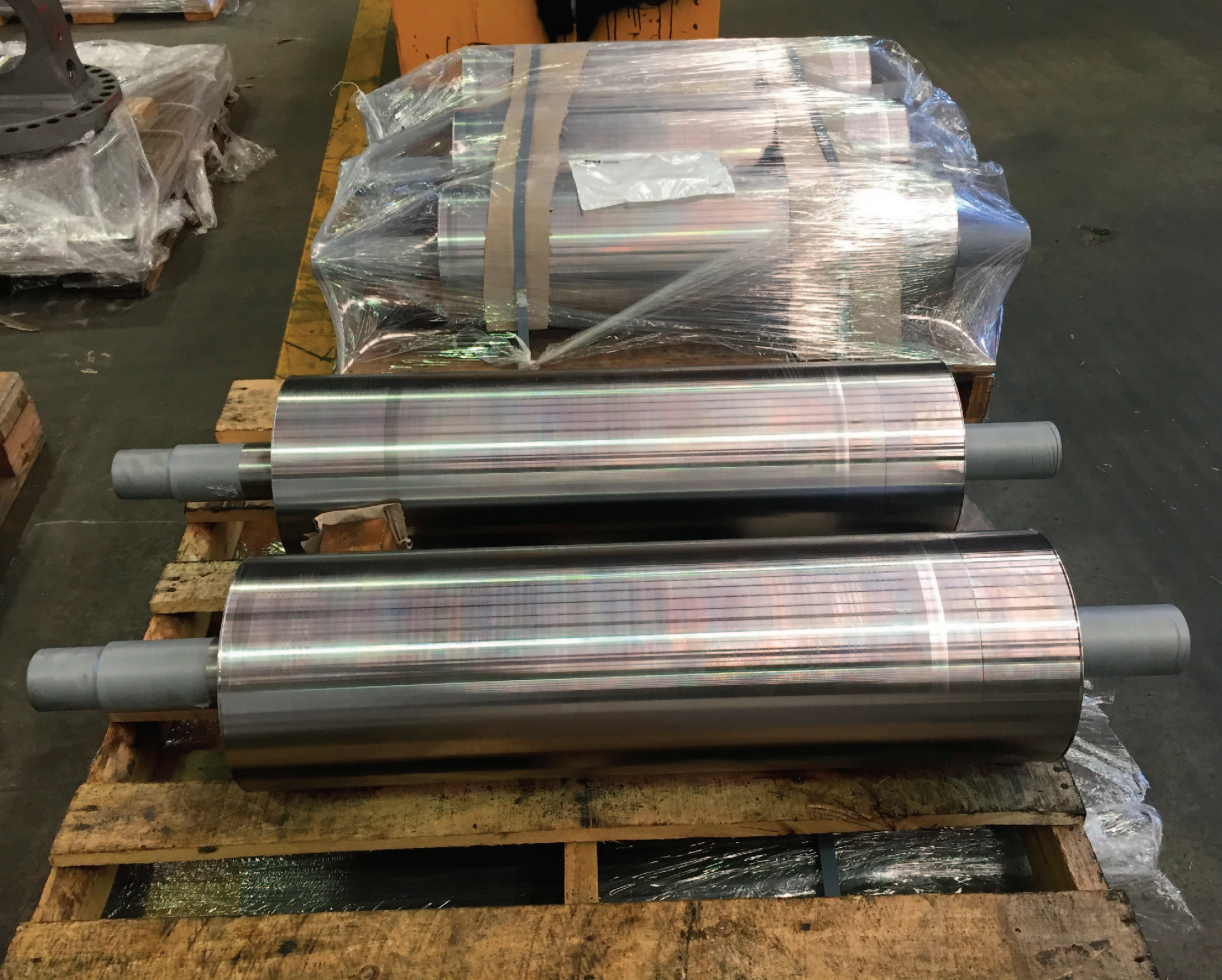
PRODUCTIVITY | INNOVATION | CONSERVATION



**LaserBond® Composite Carbide Steel Mill Rolls
outperforming every OEM roll!**



An excellent choice

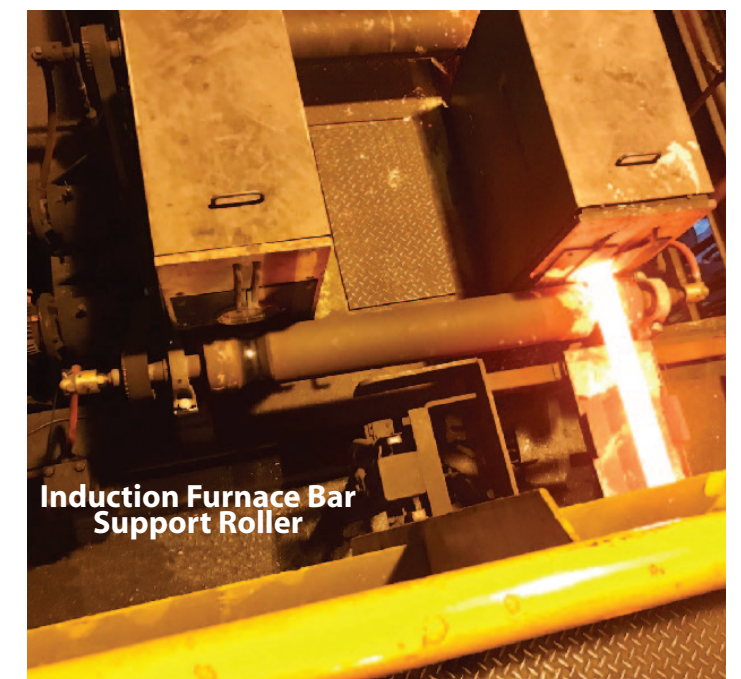


LaserBond® Composite Carbide Long Life Steel Mill Rolls

Steel Mills around the world are now experiencing the significant benefits of installing LaserBond® Composite Carbide Rolls - huge increases in service life and dramatic decreases in maintenance costs.

LaserBond® re-engineers and fully manufactures a comprehensive range of Steel Mill Rolls and Roll Shells surface engineered with a Composite Carbide.

Rolls and Shells can be purchased with the confidence of knowing that they can replace existing OEM rolls, be installed and operational without any requirements to retrofit or modify your existing plant. Steel Mills using the LaserBond® Long Life Rolls have all reported exceptional in-service performance!



Induction Furnace Bar
Support Roller

LaserBond® manufactures, repairs, reclaims and enhances the performance of high wear critical metal components in a range of capital intensive industries. These include

steel making, mining, minerals processing, manufacturing, power generation, transport, marine, plant and machinery, fluid handling, agricultural sectors and many others.

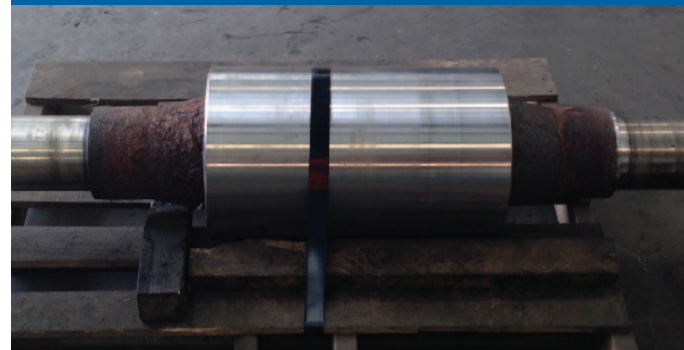
Cantilever Rolls



Run-Out Rolls



Billet Pinch Rolls (t&b)



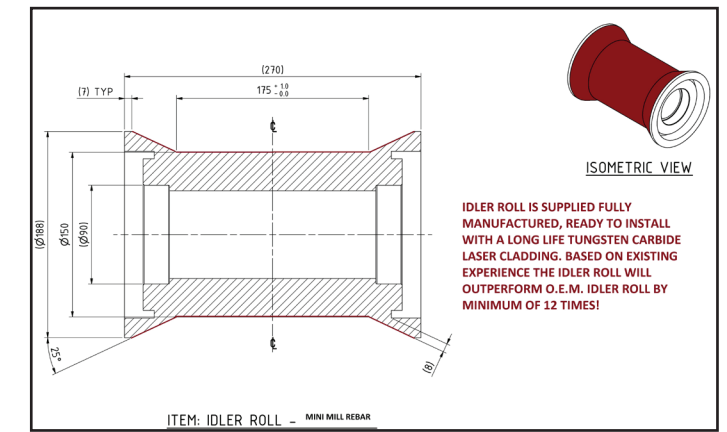
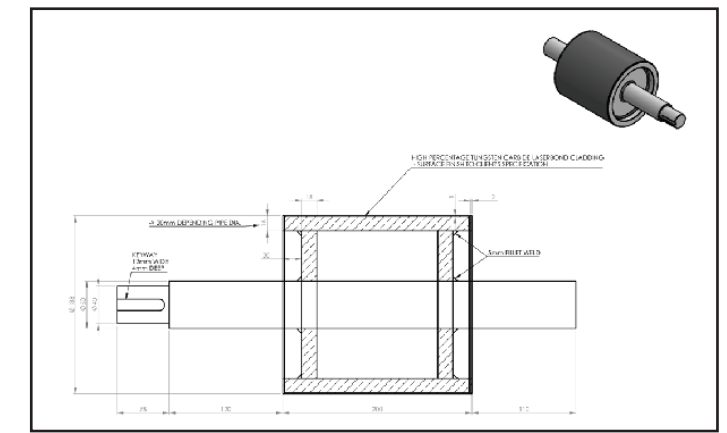
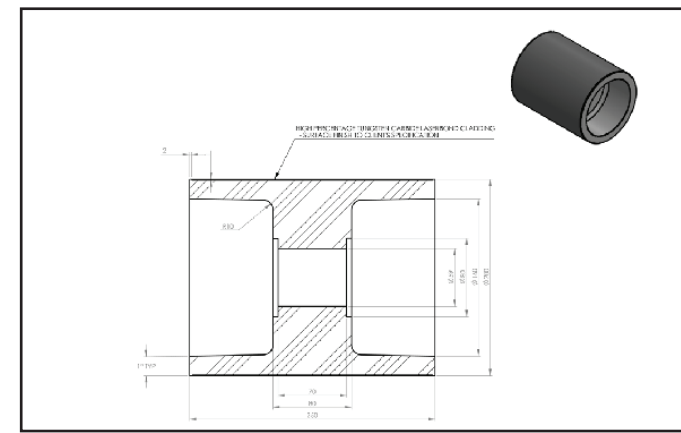
Persuader Rolls



Features and Benefits

- Surface texture finished to individual customer requirements from 'as clad' with a roughness similar to coarse emery paper, to a superfinish Ra 0.2-0.5 micron
- Coarser finish offers excellent 'pulling' through where necessary
- Superfinish offers mirror finish – no scratches etc on the end product
- Roll Shell manufactured to replace OEM Shell.
- No retrofitting or modifications required on any LaserBond® Steel Mill Roll products
- Manufactured to customer specifications
- Product coming off the Rolling Mill generally defaults to one side of every Run-Out Roll increasing the wear factor
- A LaserBond® surface engineered Carbide Composite produces Rolls with up to 20 times longer life!
- Another tried and proven LaserBond® product demonstrating that a modified Composite alloy can take the pressures applied by a Top and Bottom Pinch Roll
- Outstanding resistance to frictional wear and operating pressure
- Rolls are supplied with Part No. laser engraved on them for ease of identification and traceability
- All shipping costs including freight and duty (where it applies) are rolled into a single quoted price covering door to door delivery to make doing business easy
- Rolls are delivered in sturdy fumigated wooden crates designed to be lifted by forklift


Cooling Bed Alignment Rolls





Since 1992 we have pursued a vision of increasing component performance and extending plant and machinery life through the research, development and application of advanced surface engineering technologies. Capital-intensive industries rely on plant and equipment performing at peak efficiency for the longest possible period to maximise productivity. Our capabilities incorporate a unique range of advanced

surface-engineering technologies and services designed to enhance the life and performance of machinery, equipment and production-vital components. LaserBond®'s facilities in Sydney and Adelaide offer a wide range of in-house specialised service capabilities to enable large and complex projects to be completed quickly and reliably.



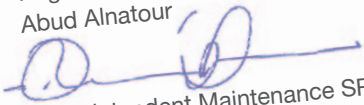
To Whom it May Concern

With the increased annual throughput in the Sydney Rolling Mill production year on year, the Maintenance team was faced with a number of challenges around the life of some components that was not lasting even between down days.


The Maintenance Engineering Team at OneSteel had heard of some of the application successes of a local company called **LaserBond Ltd.** with their Carbide Composite technology. Within a time period of less than 6 months **LaserBond** has become an Integral Supply Chain Partner with our Procurement and Maintenance Teams. In every case the Carbide Composite components that are manufactured and supplied to us by **LaserBond** have far exceeded our expectations in terms of the service life we are now achieving.

LaserBond are now supplying us with Store Stock Items for the following components: Cantilever Rolls, Table Rolls, Lifting Aprons, Dummy Aprons, Cooling Bed Alignment Rolls, Persuader Rolls and other components.

LaserBond have met and exceeded our KPI's as a supplier at every level including Cost Reduction, On-Time Delivery, QA/QC Inspection.

Regards,
 Abud Alnatour

 Superintendent Maintenance SRM

Liberty OneSteel
 Address line 1, Address Line 2, City/Town, Post Code/Zip Code, Country
 T: +61 (0) 1234 5678 E: contactus@libertyonesteel.com
www.libertyonesteel.com



This letter of commendation is from Liberty OneSteel, a member of Liberty House Group and a division of the GFG Alliance. Liberty OneSteel is Australia's largest manufacturer and supplier of structural and reinforcing steel, including hot rolled structurals, pipe and tube, rod, reinforcing bar, wire products and rail.

Facilities:

Head Office:

LaserBond® Limited

2/57 Anderson Road,
Smeaton Grange, NSW 2567
Phone: +61 (0)2 4631 4500

South Australia Branch:

LaserBond® Limited (SA)

112 Levels Road,
Cavan, SA 5049
Phone: +61 (0)8 8262 2289

Victoria Branch:

LaserBond® Limited (VIC)

26-32 Aberdeen Road,
ALTONA VIC 3018
Phone: +61 3 9398 5925

International Sales or Enquiries

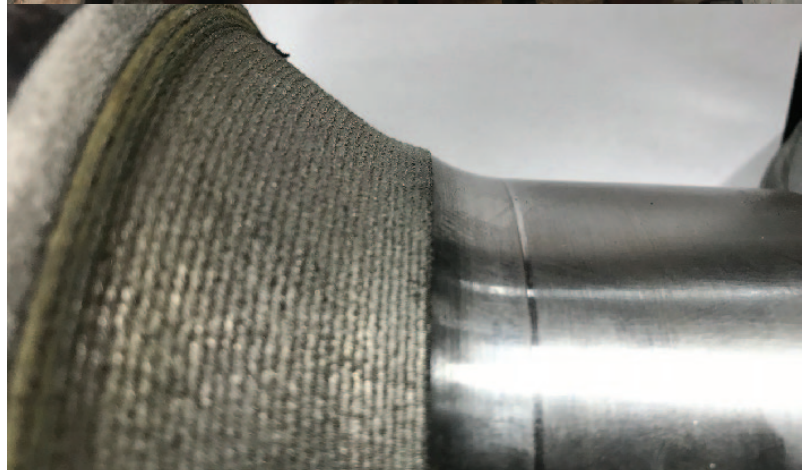
Brian Probeta
2/57 Anderson Road,
Smeaton Grange NSW 2567
brianp@laserbond.com.au
Mobile: +61 (0)435 564 240
Phone: +61 2 4631 4500

Email:

- Services@laserbond.com.au
- Products@laserbond.com.au
- Corporate@laserbond.com.au

FreePhone: 1300 LASERBOND®

www.laserbond.com.au



ASX:LBL

LASERBOND®
PRODUCTIVITY | INNOVATION | CONSERVATION